

# TOPICAL TIDBITS



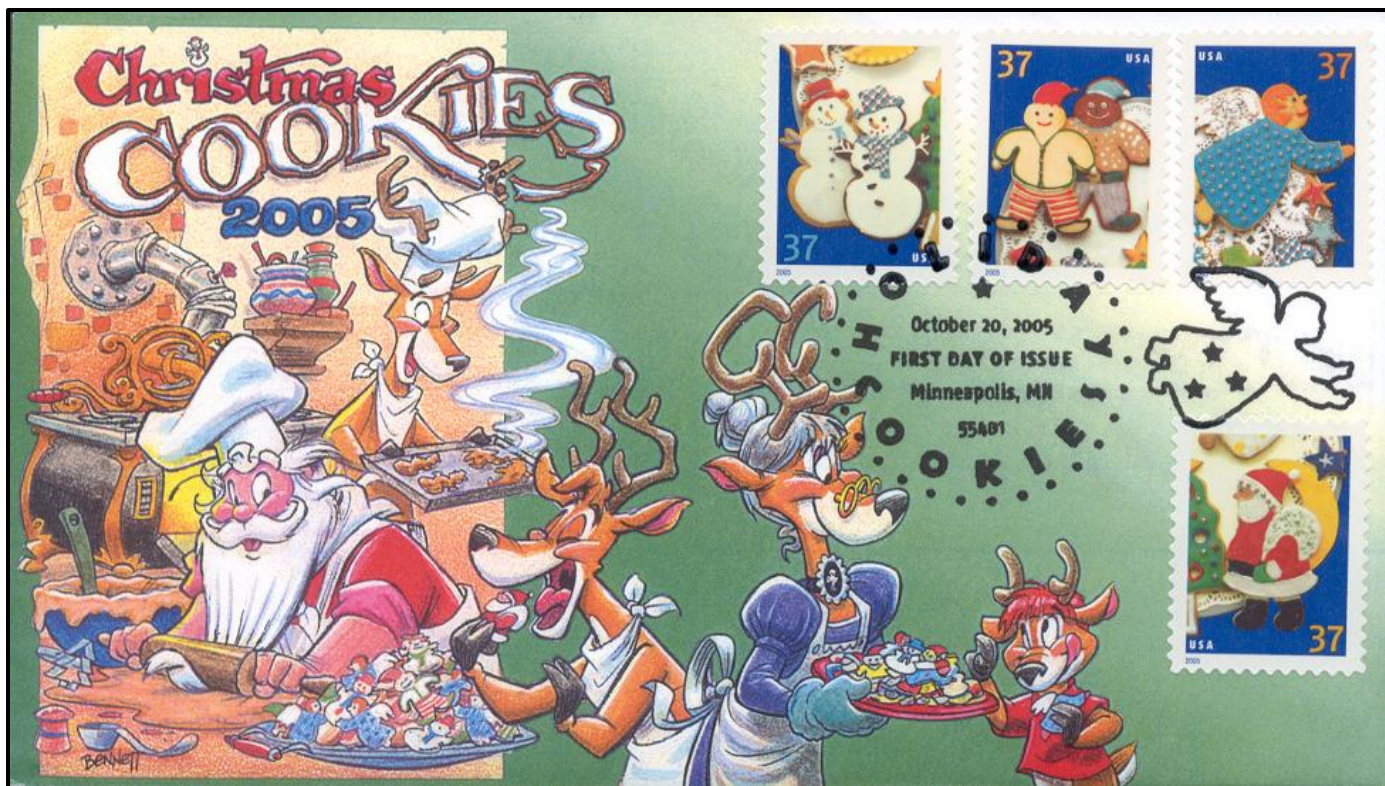
November/December 2013

Volume 2 Issue 6

## Gingerbread

Gingerbread has been around for centuries. However, it is typically associated with winter holidays such as Christmas. The aroma of gingerbread being baked in the oven conjures up images of cookies and cakes and their sweet tastes.

In 2005, the U.S. Postal Service introduced a set of four 37¢ stamps depicting colorfully decorated cookies, one of which was made of gingerbread. The first day cover below was created by Dave Bennett, a cartoonist and cachetmaker. His busy cover is the subject of this issue's contest. How many different stamp collecting topics are depicted in this cover? Make your list on the entry form on page 8 and send it in to win holiday surprises. The person with the most possible topics will win a special prize!



# FOR SALE BY OWNER



From the USPS: Four new, cheerful holiday stamps capture the delicious tradition and childlike nostalgia of making gingerbread houses. Stumbling across a magical cottage made of cake and candy, Hansel and Gretel knew just how special gingerbread houses could be—but no witches will jump out of these confectionery domiciles. Instead, the Gingerbread Houses stamps will add a touch of whimsy to your holiday mail.

These stamps feature four different gingerbread houses set against a bright blue background. Made with gingerbread and royal icing, each house has sugary fruit slices for shingles, peppermint sticks for support beams, and round, candy-coated chocolate for doorknobs and holly berries, and yet each is unique.

Design your own gingerbread house stamp below. Then pretend it's for sale and write a detailed description of what makes it such a great house.

## For Sale By Owner:

---



---



---



---



---



---



---



---



---



---



---



---



---



---



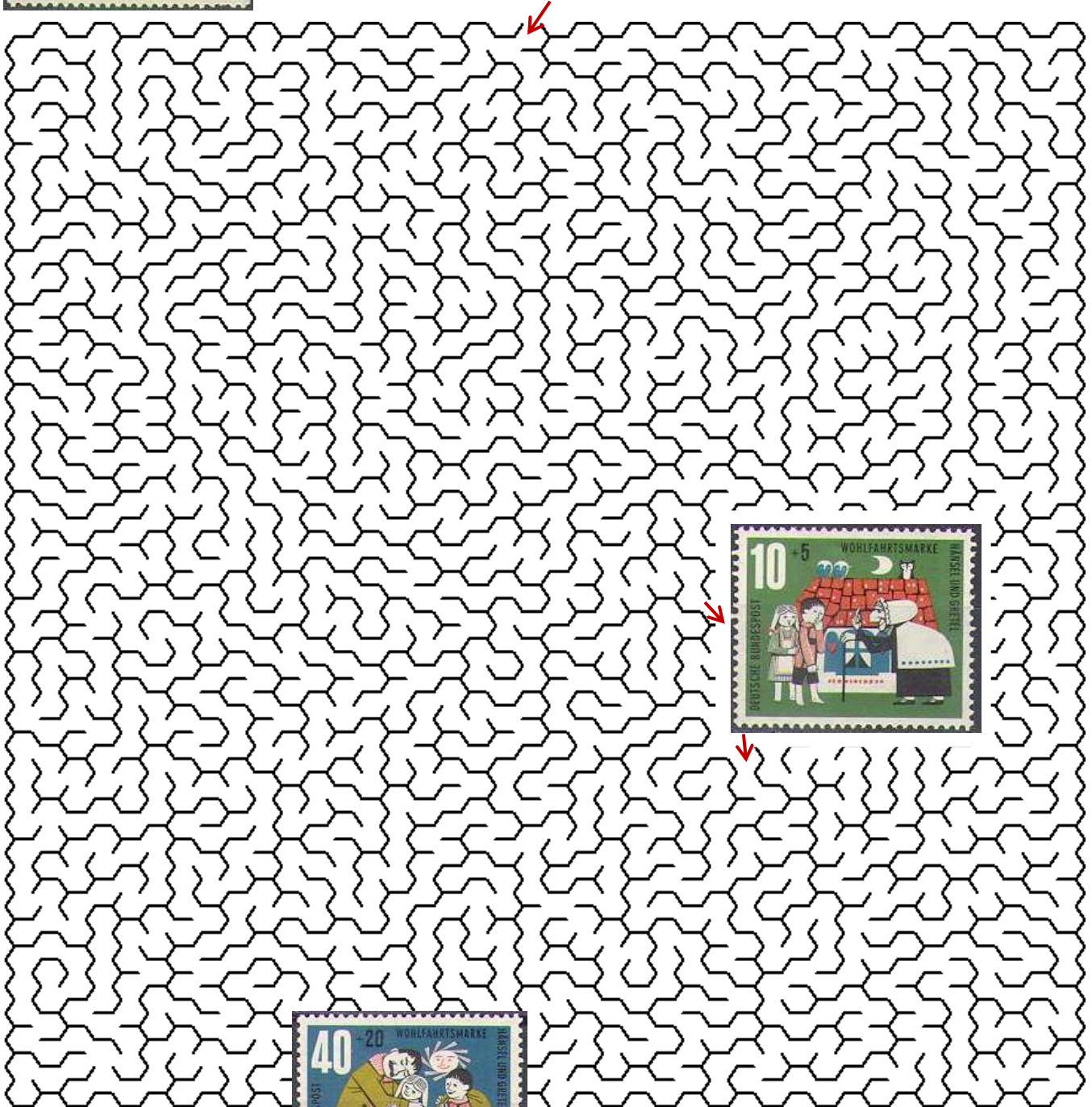
---



# HANSEL AND GRETEL



"Hansel and Gretel" is a German fairy tale written by the Grimm Brothers in 1812. Hansel and Gretel are a young brother and sister threatened by a witch living deep in the forest in a house made of gingerbread. The two children save their lives by outwitting the witch. Help them get through the forest maze to the gingerbread house and then escape from the witch and back to their father. Follow the arrows!



More information about Hansel and Gretel can be found in the March/April 2012 issue of Topical Tidbits.



You made it.  
Congratulations!

# GINGERBREAD MAN GLYPH

Follow the directions to decorate your gingerbread man.




## EYES:

If you have never been to a stamp show, color the eyes blue.  
If you have been to a stamp show, color the eyes green.



## NOSE:

If you are a girl, color the nose yellow.  
If you are a boy, color the nose red.

## MOUTH:

If you collect topical stamps, make an open mouth.   
If you collect stamps by country, make a half-moon mouth.   
If you collect topicals and stamps by country, make a smiling mouth. 

## HAND AND FEET LINES:

If you hold your tongs with your right hand, make zigzag lines.   
If you hold your tongs with your left hand, make wavy lines. 

## BUTTONS:

If you've been collecting stamps for less than a year, make 3 triangle buttons.

If you've been collecting stamps for 1-3 years, make 3 circle buttons.

If you have been collecting stamps for 4 or more years, make 3 square buttons.

## BOW:

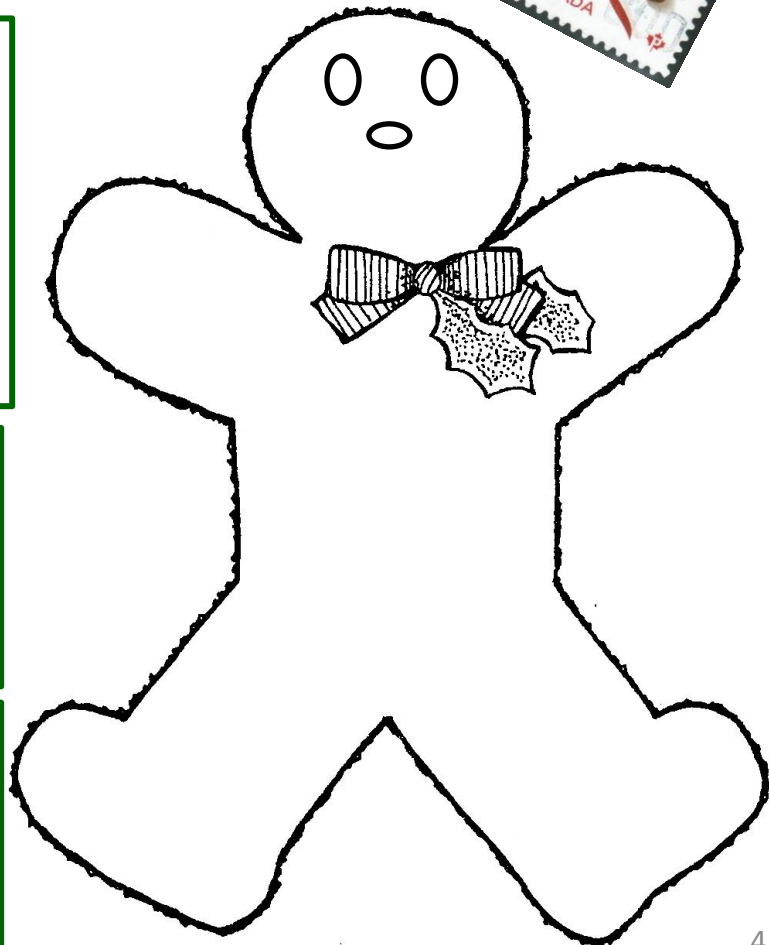
If you spend less than 3 hours a week on your stamps, color the bow blue.

If you spend more than 3 hours a week on your stamps, color the bow red.

## GINGERBREAD COLOR:

If you've exhibited your stamps, color the gingerbread man dark brown.

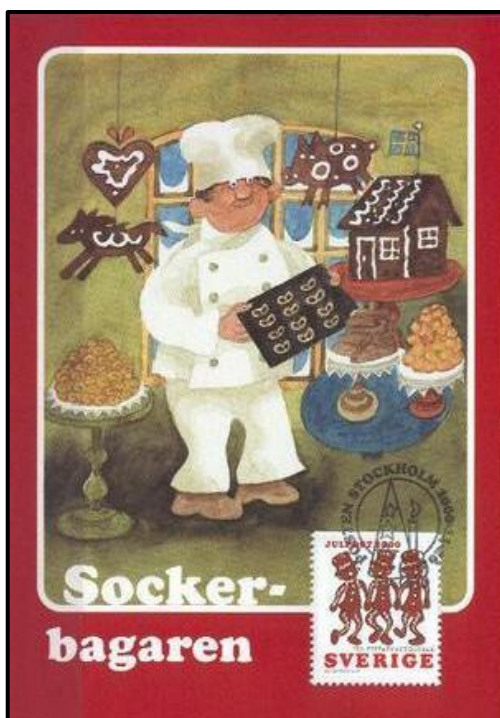
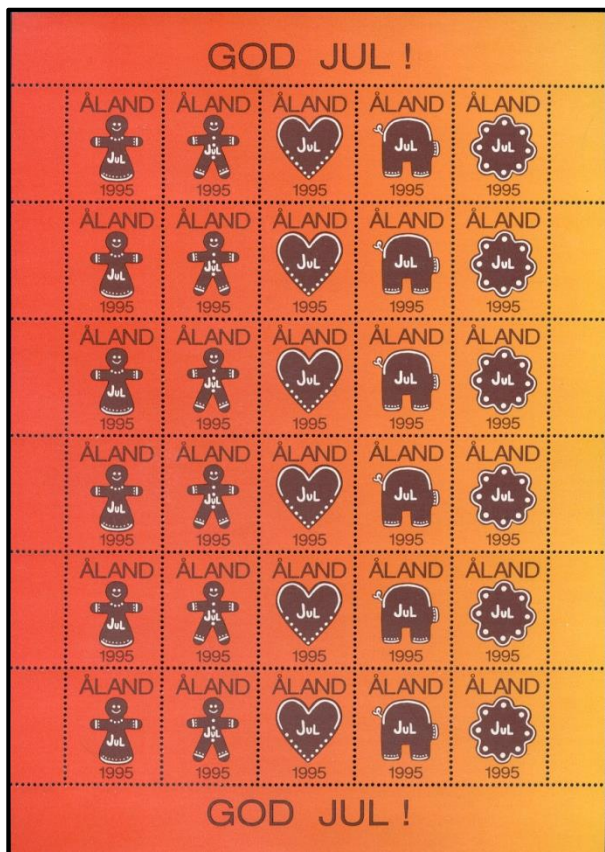
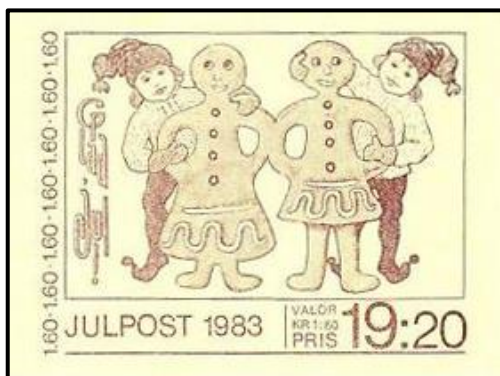
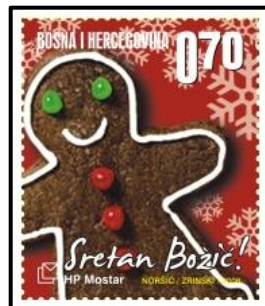
If you've never exhibited your stamps, color him light brown.





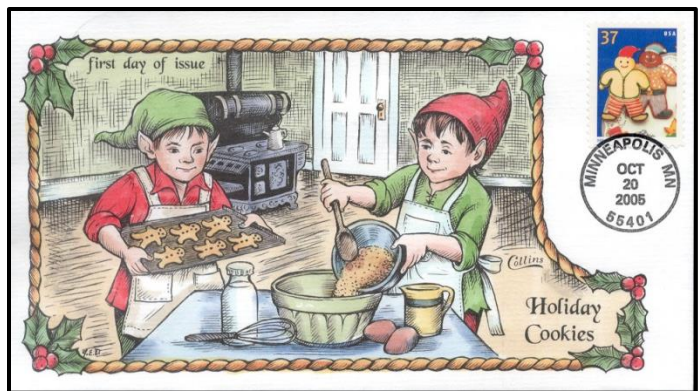
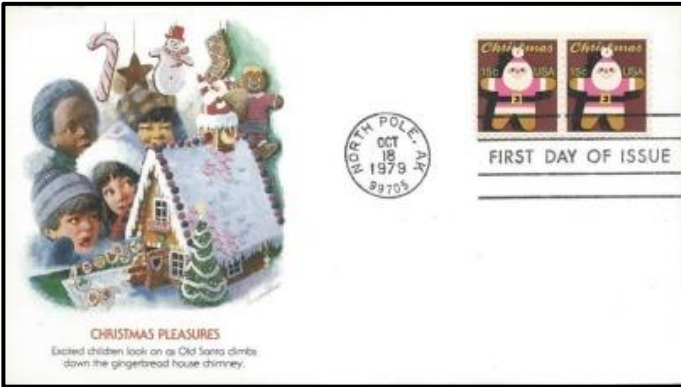
# GINGERBREAD COLLECTION

God jul  
og godt nyttår!





# GINGERBREAD COVER COLLECTION



# Gingerbread





# GINGERBREAD COVER CONTEST FORM

Full Name: \_\_\_\_\_

Street address: \_\_\_\_\_

City: \_\_\_\_\_ State: \_\_\_\_\_ Zip Code: \_\_\_\_\_

Age: \_\_\_\_\_

My stamp collecting interests: \_\_\_\_\_

These are the topics that I found illustrated in the cover: \_\_\_\_\_

Use the back if you need more room.

Mail to MaryAnn Bowman, P.O, Box 1451, Waukesha, WI 53187 by **December 31, 2013.**

