



# TOPICAL TIDBITS

September/October 2014

Volume 3 Issue 5

## Magic in Literature

Many stories for children include magic—sometimes it's a magical person, an enchanted item, or a magic spell. This issue of *Topical Tidbits* explores some of the more well-known stories. Maybe you have even read a few of them — *The Wizard of Oz*, *Harry Potter*, *Alice in Wonderland*, and quite a few others. If you haven't read them, they should be easy to find at your local library. A lot of the books mentioned in this issue have also been made into movies. Some countries have issued stamps based on the screen versions. It might be fun to try to collect a book version and a film version of your favorite stories!



**Be sure to enter the contest on page 7. Entries are due by October 31, 2014.**

# Magical Items in Stories

Match each person with the magical item that belongs to him or her. Answers are on page 6.

1. \_\_\_\_\_ My magic shoes were silver in the book, not red like in the movie.

2. \_\_\_\_\_ The Lady in the Lake gave me the magical sword, Excalibur.

3. \_\_\_\_\_ A magic glass slipper helped me find a handsome prince.

4. \_\_\_\_\_ I used an invisibility cloak at Hogwarts School of Witchcraft and Wizardry.

5. \_\_\_\_\_ Lovely, wonderful thoughts and a bit of fairy dust help children fly in my story.

6. \_\_\_\_\_ An enchanted wardrobe transported my siblings and me to a land called Narnia.

7. \_\_\_\_\_ I ate a magic piece of cake in Wonderland that caused me to grow larger.

8. \_\_\_\_\_ I rubbed a magic lantern that contained a genie.

9. \_\_\_\_\_ I'm a hobbit who found a magic ring that made me invisible.

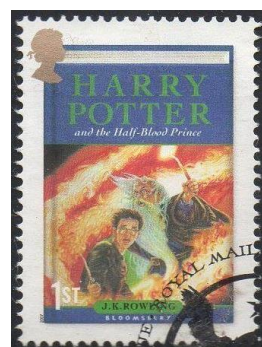
10. \_\_\_\_\_ Every time I told a lie, magic would make my nose grow longer.



A. Aladdin



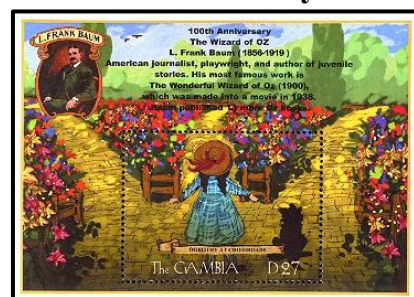
B. Alice



C. Harry Potter



D. King Arthur



E. Dorothy Gale



F. Cinderella



G. Bilbo Baggins



H. Lucy



I. Peter Pan



J. Pinocchio

# Fairy Tales

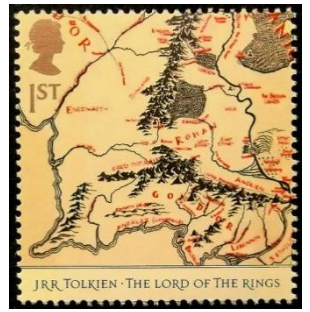
Use what you know about these fairy tales to fill in the chart.

Title	Good Characters	Bad Characters	Setting	Magical Elements
<p><b>Snow White</b></p> 				
<p><b>Sleeping Beauty</b></p> 				
<p><b>Rumpelstiltskin</b></p> 				

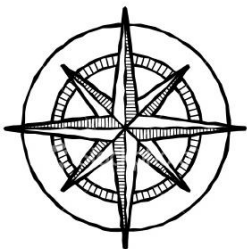
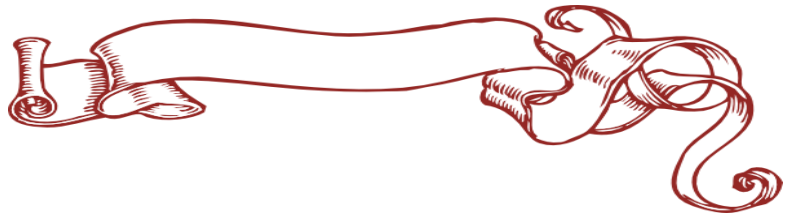
# Magical Lands

Sometimes a book may include a map of the imaginary land where the story takes place. You might have seen a map of Narnia where the *The Lion, the Witch and the Wardrobe* takes place, or a map of Neverland from *Peter Pan*. Frank L. Baum, the author of the *Wizard of Oz* books, divided his Marvelous Land of Oz into five countries-the Emerald City was in the middle, surrounded by the Munchkin Country, the Gillikin Country, the Winkie Country, and the Quadling Country.

Now, it's your turn! Design a magical land of your own, or take an imaginary place you have read about and make a map of it. Be sure to label and color it.

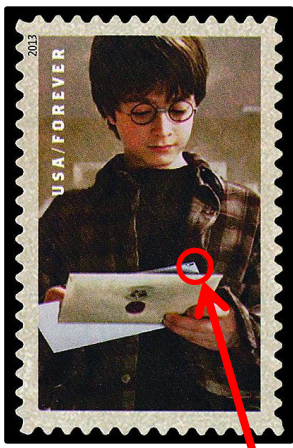


This stamp is a map of the lands mentioned in J.R.R. Tolkien's *The Lord of the Rings*.



# Harry Potter

The Harry Potter books have been a hit with young readers since their debut in 1997. Over 400 million copies have been sold worldwide and have been translated into 68 languages. In the books, Harry and his friends attend Hogwarts School of Witchcraft and Wizardry where they have many magical adventures. In 2013, the United States Postal Service issued a set of Harry Potter stamps. Hidden on seven of the stamps are tiny words called "micro printing." These can be seen using a magnifying glass. The words form a sentence when put together.



The secret word on this stamp is "YOU."

There are many magical items in the Harry Potter series. See how many you can find in the puzzle below. Answers on page 6.

- |             |                    |
|-------------|--------------------|
| Wand        | Knight Bus         |
| Snitch      | Deluminator        |
| Howler      | Goblet of Fire     |
| Cauldron    | Invisibility Cloak |
| Sorting Hat | Sorcerer's Stone   |
| Broomstick  | Hogwarts Express   |

D	T	I	K	H	T	R	E	P	O	I	W	A	C	B	G	H	Y	F	C	D	E	S	P	B	H	V	K	N	M	B
C	P	O	I	Y	T	R	K	S	O	R	Y	K	A	O	L	C	Y	T	I	L	I	B	I	S	I	V	N	I	N	H
G	O	B	K	X	O	T	Z	I	U	J	B	G	F	D	E	K	M	L	P	S	M	E	D	C	V	G	I	V	Z	O
H	Q	A	S	S	E	R	P	X	E	S	T	R	A	W	G	O	H	O	N	S	T	N	M	V	D	L	G	P	R	W
D	E	L	U	M	I	N	A	T	O	R	C	V	N	M	H	G	D	I	V	S	O	R	T	I	N	G	H	A	T	L
S	T	W	C	Q	U	L	P	I	A	B	F	T	C	N	W	O	T	S	C	B	T	Y	N	K	J	P	T	H	E	E
N	G	O	B	L	E	T	O	F	F	I	R	E	O	A	Q	C	Z	K	C	I	T	S	M	O	O	R	B	B	Y	R
C	A	U	F	I	T	S	E	P	O	R	T	N	N	G	H	M	S	N	T	W	R	T	H	C	E	R	U	G	J	K
H	I	C	A	U	L	D	R	O	N	M	U	D	W	E	N	O	T	S	S	R	E	R	E	C	R	O	S	P	I	R



# Magic Fun

Q: What did the prince say after the witch turned him into a frog?

A: Ribbit! Ribbit!



Sign outside a witch's store:  
"Witch's parking only! All others will be toad!"

*The Nutcracker and the Mouse King* was originally written in 1816 by E. T. A. Hoffmann. In the story, a young girl receives a nutcracker that comes to life. After defeating the evil Mouse King, they visit a magical kingdom. In 1892, the Russian composer Tchaikovsky turned the story into a ballet which became his most famous composition, and perhaps the most popular ballet in the world. Perhaps you have seen it!



## "Magic" Stamps:

The USPS issued some stamps with magic images. In order to see these, you must have a Stamp Decoder. Although these are no longer sold by the USPS, they can still be found on eBay. For more information about these special stamps, visit: [www.hiddenimagestamps.info](http://www.hiddenimagestamps.info).



The Stamp Decoder is a small piece of clear plastic that reveals hidden images on some U.S. stamps.

## Answers:

Magical items in Stories, pg.2:

1. E
2. D
3. F
4. C
5. I
6. H
7. B
8. A
9. G
10. J

Harry Potter, pg.5:

D	T	I	K	H	T	R	E	P	O	I	W	A	C	B	G	H	Y	F	C	D	E	S	P	B	H	V	K	N	M	B
C	P	O	I	Y	T	R	K	S	O	R	Y	K	A	O	L	C	Y	T	I	L	I	B	I	S	I	V	N	I	N	H
G	O	B	K	X	O	T	Z	I	U	J	B	G	F	D	E	K	M	L	P	S	M	E	D	C	V	G	I	V	Z	O
H	Q	A	S	S	E	R	P	X	E	S	T	R	A	W	G	O	H	O	N	S	T	N	M	V	D	L	G	P	R	W
D	E	L	U	M	I	N	A	T	O	R	C	V	N	M	H	G	D	I	V	S	O	R	T	I	N	G	H	A	T	L
S	T	W	C	Q	U	L	P	I	A	B	F	T	C	N	W	O	T	S	C	B	T	Y	N	K	J	P	T	H	E	E
N	G	O	B	L	E	T	O	F	F	I	R	E	O	A	Q	C	Z	K	C	I	T	S	M	O	O	R	B	B	Y	R
C	A	U	F	I	T	S	E	P	O	R	T	N	N	G	H	M	S	N	T	W	R	T	H	C	E	R	U	G	J	K
H	I	C	A	U	L	D	R	O	N	M	U	D	W	E	N	O	T	S	S	R	E	R	E	C	R	O	S	P	I	R

# Magical Contest

Turn any object into a postage stamp by casting a spell. Identify the object on the line below, then draw a picture of the stamp it turned out to be on the right. Write a 5-step spell. The first letter in each line is given. NOTE: It spells the word STAMP vertically. For example, the letter "S" could be, "Shake 10 pounds of salt into the boiling water. The contest deadline is October 31, 2014. Please mail this page to:

MaryAnn Bowman  
P.O. Box 1451  
Waukesha, WI 53187



Name \_\_\_\_\_ Age \_\_\_\_\_  
Address \_\_\_\_\_  
City \_\_\_\_\_ State \_\_\_\_\_ Zip \_\_\_\_\_  
Stamps I Collect \_\_\_\_\_  
\_\_\_\_\_

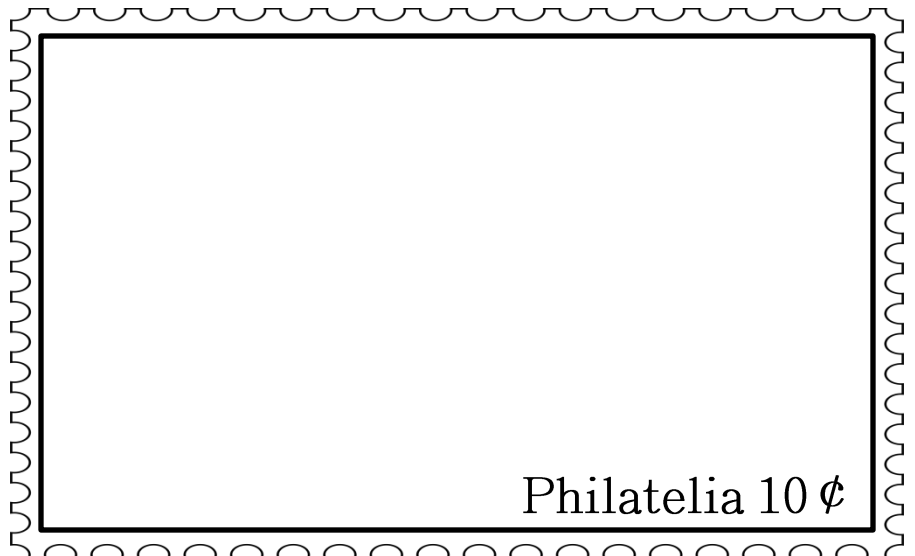
Object Being Turned into a Stamp: \_\_\_\_\_

## Stamp Spell:

S  
T  
A  
M  
P

\_\_\_\_\_  
\_\_\_\_\_  
\_\_\_\_\_  
\_\_\_\_\_  
\_\_\_\_\_

Stamp-tastic!  
You're a  
stamp!



Philatelia 10¢

# Magic

