



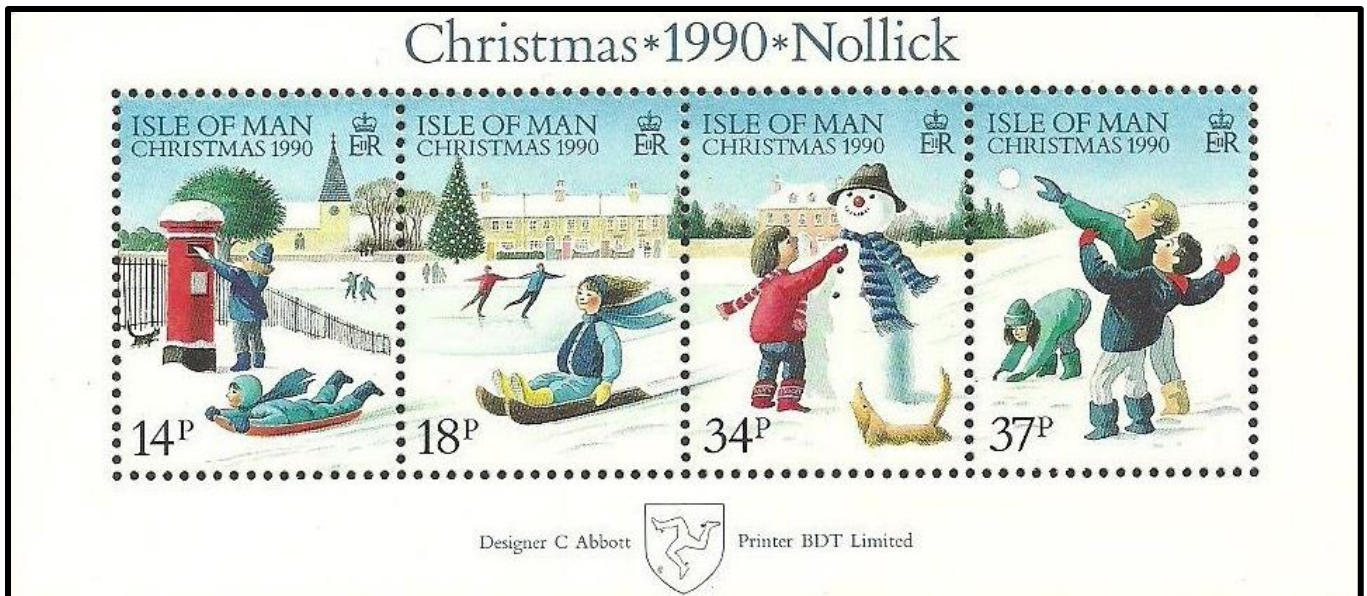
TOPICAL TIDBITS

November/December 2014

Volume 3 Issue 6

Snow

Snow— all kids love it, most adults hate it. Even those that don't like it, though, have to admit how beautiful it is. In the late 1800s, one man loved snow so much, he spent many years of his life photographing it. Wilson Bentley, from Vermont, was one of the first people to photograph snowflakes. There is a wonderful book about him called Snowflake Bentley by Jaqueline Briggs Martin. You should be able to find it at your local library or you can have an adult find a recording of it on YouTube. Meanwhile, enjoy all the snow activities in this issue of *Topical Tidbits*. Maybe it will inspire you to start your own collection of snow related stamps!



In how many of these snow activities have you participated?

Snowflakes

Snowflakes are forms of precipitation that start as ice crystals the size of a speck of dust in the sky. As these specks of dust fall, they join together to build a larger ice crystal which has six arms. According to the National Oceanic and Atmospheric Administration (NOAA), the six-armed snowflakes develop because “they reflect the internal order of the crystal’s water molecules as they arrange themselves in predetermined spaces.” This process is called crystallization.

Atmospheric conditions determine a snowflake’s shape. In general, snowflakes with long needle-like crystals form at 23°F, while flat plate-like crystals form at 5°F, according to the NOAA. Despite these basic similarities, they all look different under a microscope. In addition, microscopic changes develop because they fall from the sky at different angles and are subject to changing atmospheric conditions like humidity. [Source:www.sciences360.com]

These snowflake stamps were issued in 2013. You may have seen them on “junk” mail.



Snowflake Challenge

The set of four stamps, at right, was issued in 2006. These, and the stamps above, were photographed by a California physicist. Can you draw the other half of each of these snowflakes? (Hint: it might be easier to start in the center of each snowflake and work your way out.) To see what the complete stamps look like, turn to page 5.



Snow Stamps

There are lots of ways to collect “snow” stamps. The obvious place to look is Christmas stamps that show winter scenes, like the ones in the box below. See if you can guess the “snow” connection of each of the stamps at the bottom of the page. Answers are on page 5.



Christmas stamps with snow



1. Snow



2. Snow



3. Snow



4. Snowy



5. Snowy



6. Snow



7. The Snow



8. Snow



9. Snowflake moray



10. Snow

Snowman Glyph

Follow the directions in each box to color the snowman the right colors.



Hat	If you've mailed a letter this week	If you haven't mailed a letter this week
	Dark Brown	Black
Broom	If you're a member of a stamp organization	If you're not a member of a stamp organization
	Brown	Yellow
Broom Stick	If you know how to use tongs	If you don't know how to use tongs
	Red	Purple
Wreath	If you collect holiday stamps	If you don't collect holiday stamps
	Dark Green	Light Green
Scarf	If you visited the post office this month	If you haven't visited the post office this month
	Yellow	Orange



Snow Fun

Jokes:

Q: What do you get when you cross a snowman and a vampire?

A: Frostbite

Q: What do snowmen eat for breakfast?

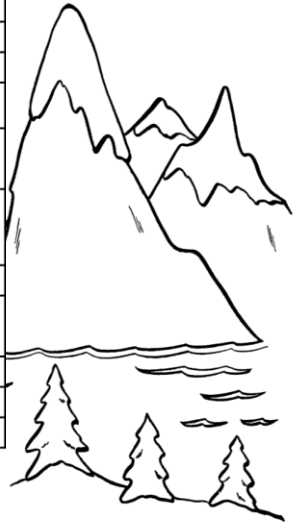
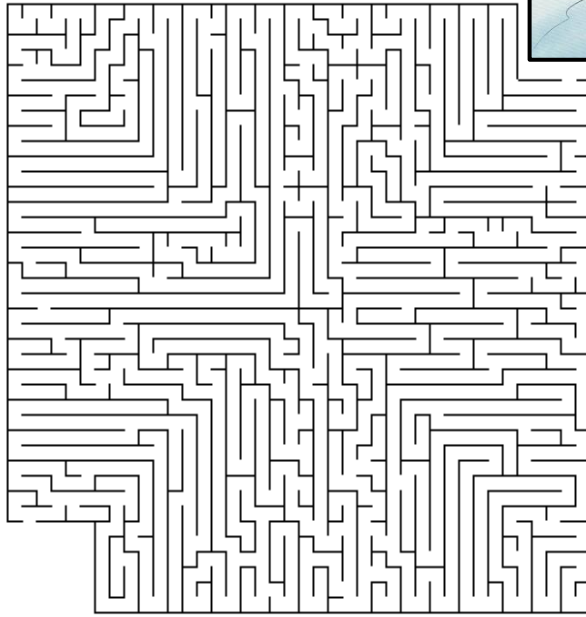
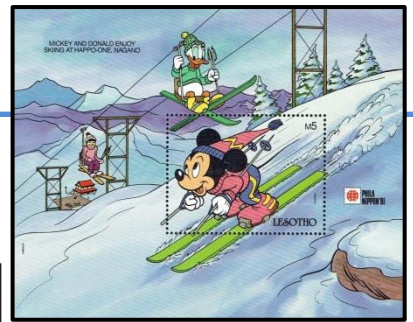
A: Frosted Flakes

Q: What kind of math do Snowy Owls like?

A: Owlgebra



Can you help Mickey Mouse get to the bottom of the hill?



Congratulations! You made it to the bottom of the slope.

New Issues:



Look for these snow stamps at a post office near you. They are new for the 2014 holiday season.

Answer Key:

Snow Stamps,
page 3

1. Snowflake
2. Snow boarding
3. Snowdrops
4. Snowy owl
5. Snowy egret
6. Snowman
7. The Snow Queen
8. Snow geese
9. Snowflake moray eel
10. Snow White



Snowflakes, page 2

This is how the original stamps looked. How well did yours turn out?

Snow

