



# TOPICAL TIDBITS

July~September 2016

Volume 5 Issue 3

## Hawaii

### Fun Facts:

- Under-sea volcanoes that erupted millions of years ago formed the islands of Hawaii.
- Hawaii state's nickname is the *Aloha State*.
- The word *Aloha* is one of the most commonly used words in Hawaiian language. It can mean *hello, welcome, love, best wishes, or goodbye*.
- Iolani Palace, in Honolulu, is the only royal palace in the U.S.
- Hawaii is the only U.S. state made up entirely of islands.
- Hawaii is the southernmost state.
- Hawaii is the only U.S. state that grows coffee, cocoa, and vanilla beans.
- Hawaii Island, also called *The Big Island*, is getting bigger by about 42 acres each year due to the continuous eruption of the Kilauea Volcano. It's been erupting for 30 years!
- The Hawaiian language has only 12 letters (A, E, I, O, U, H, K, L, M, N, P and W).
- The state bird is the *nene* or Hawaiian goose.
- The state flower is the hibiscus.
- The state dance is the hula.
- Although Hawaiians had been surfing since the 4<sup>th</sup> century, the first recorded sighting of actual surfing was by Lieutenant James King in 1779.
- The 80¢ airmail stamp from 1952, at left, was issued to pay the airmail rate for shipping orchids from Hawaii to the U.S. mainland. The design features Diamond Head on the island of Oahu.



# Hawaiian History Timeline

**800-1200:** Another wave of settlers from Tahiti invades the islands.

**200-500:** Polynesians, probably from the Marquesas Islands, arrive in Hawaii.

**1778:** Captain James Cook, a British explorer, anchors in Waimea Bay near Kauai. He names the islands the Sandwich Islands after Britain's Earl of Sandwich.



**1795:** The fierce warrior Kamehameha I conquers many of the islands and establishes the Hawaiian monarchy. In 1819, he dies and his son becomes Kamehameha II.

**1816:** King Kamehameha I commissions the Hawaiian Flag. The design, which is now Hawaii's state flag, has eight red, white, and blue stripes to represent Hawaii's eight major islands. It also includes a small version of Great Britain's flag, known as The Union Jack, to symbolize Hawaii's longstanding friendship with Britain.



**1820:** American traders searching for sandalwood and whales begin to arrive in Hawaii. They are followed by American missionaries who settle on the islands to spread the teachings of Christianity.

**1839-1848:** Kamehameha III signs a series of measures that form the foundation of a constitutional government.



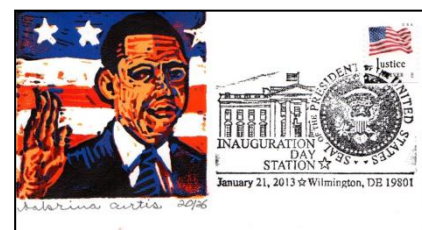
**1900:** Hawaii becomes a U.S. territory.

**1941:** On December 7, the Japanese military attacks U.S. forces in Pearl Harbor. The U.S. enters World War II.



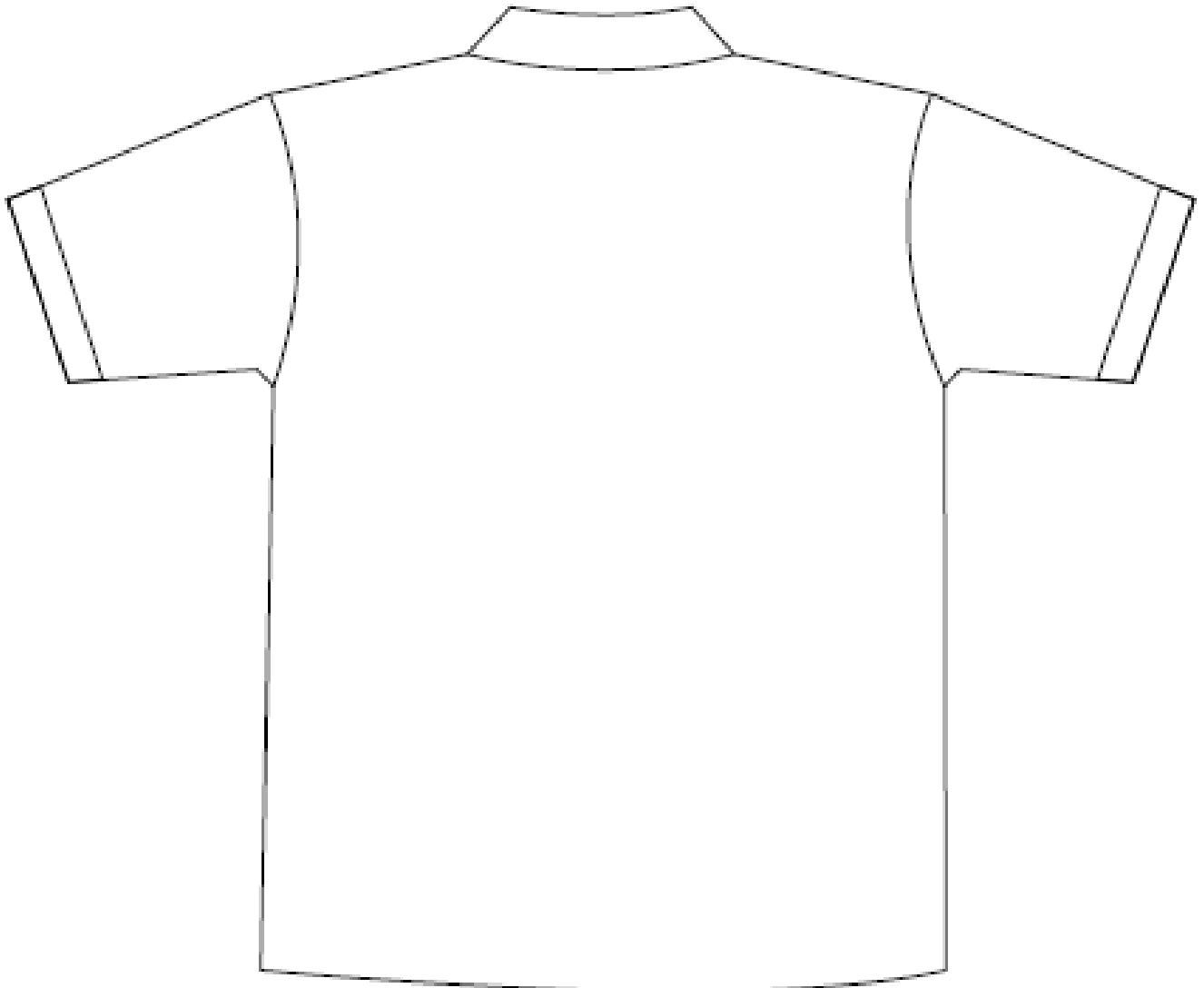
**1959:** On March 18, U.S. President Dwight D. Eisenhower signs a bill acknowledging Hawaii's statehood. On August 21, Hawaii becomes the 50th, and last, state to join the union.

**2008:** Barack Obama, born in Hawaii, is elected President of the United States.



# Aloha Shirts

Aloha shirts, also called Hawaiian shirts, are known for their bright, colorful designs. The patterned design is usually of flowers or other things found in nature. In 2012, the U.S. Postal Service issued the five stamps below. Use them to inspire your own design. Be creative!



# Greetings from Hawaii

## HAWAIIAN RAIN FOREST

12TH IN A SERIES



N A T U R E O F A M E R I C A

**Above:** In 2010, the U.S. Postal Service issued this sheet of ten commemorative stamps. John Dawson, from Hilo, Hawaii, painted the scene which includes 24 species. Hawaii is the only state in the United States that has tropical rainforests. The rainforests are spread out among the state's eight islands and are among the wettest places on earth. Circle all the creatures you can find hiding in the forest.



**Above:** Have fun coloring this "Greetings from Hawaii" stamp featuring a view of Waikiki Beach. In the distance is the extinct volcano Diamond Head. A yellow hibiscus, the Hawaii state flower, is in the foreground.

© The Perforated Press



# The Hawaiian Missionary Stamps

## The "Hawaiian Missionary" Stamps of 1851-1853



The first official Hawaiian post office was established in December 1850. Postmaster Henry M. Whitney had stamps printed locally in three denominations. Philatelists call these rare stamps "Hawaiian Missionaries" because virtually all were used by Christian missionaries on outbound mail. Only 28 covers with Missionary stamps are known to exist; only the Dawson cover (right) bears the 2¢ stamp. The two 13¢ stamps were unusual as they prepaid postage in two countries—Hawaii and the U.S.



"Hawaiian Missionary" stamp  
1851  
USA37



"Hawaiian Missionary" stamp  
1851  
USA37



"Hawaiian Missionary" stamp  
1851  
USA37



"Hawaiian Missionary" stamp  
1852  
USA37

This souvenir sheet was issued in 2002 to commemorate the Hawaiian missionary stamps. The sheet reads,

*The first official Hawaiian post office was established in December 1850. Postmaster Henry M. Whitney had stamps printed locally in three denominations. Philatelists call these rare stamps, "Hawaiian Missionaries" because virtually all were used by Christian missionaries on outbound mail. Only 28 covers with Missionary stamps are known to exist; only the Dawson cover [pictured to the left] bears the 2¢ stamps. The two 13¢ stamps were unusual as they prepaid postage in two countries- Hawaii and the U.S.*

The Dawson cover was in a bundle of mail that was supposed to be burned. Because the bundle was so tightly packed, though, it put the fire out. Shortly after, the factory was abandoned and 35 years later a worker found the bundle. Notice the scorch marks on the left of the cover. In 2013 it sold for \$2.24 million at auction.

Pretend you are a missionary in Hawaii. Use the paper below to write a letter back home.

# Hawaii

