

Editor/Creator: Aimée Devine

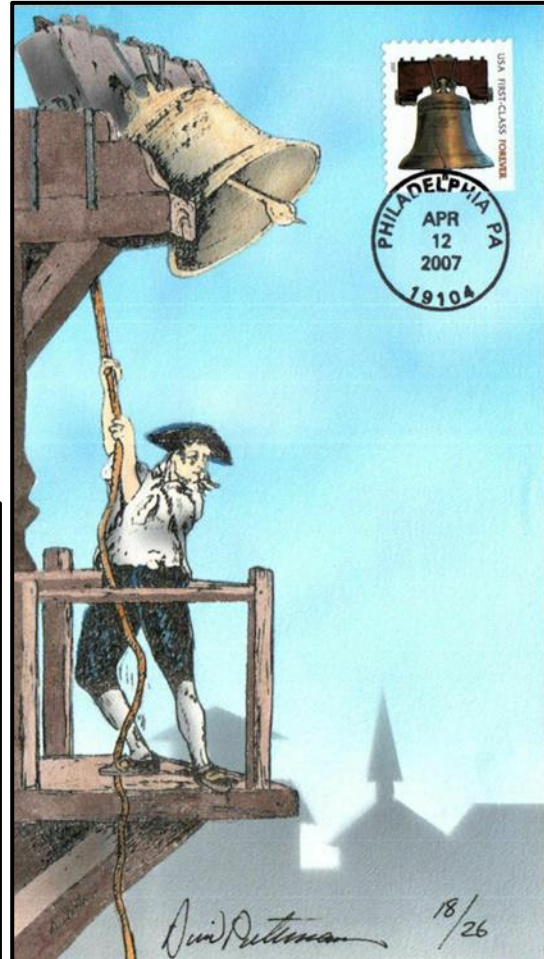
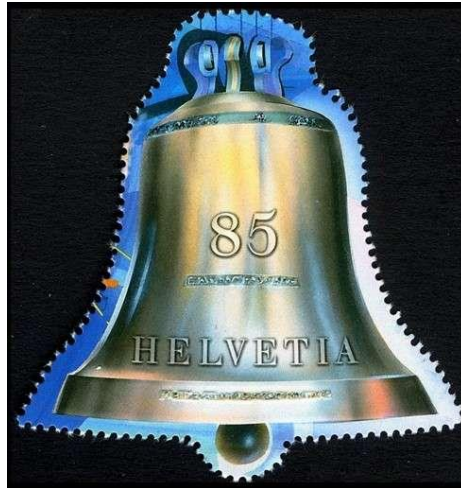
## Bells

Sleigh bells. Church bells. School bells. The Liberty Bell. There are so many kinds of bells that we encounter in our everyday lives. Have fun learning all about bells in this edition of *Topical Tidbits*. New to this issue is a philatelic dictionary. It's towards the end and is several pages long. Each page features a stamp collecting term with an illustration. Future issues will include new pages. These can be printed on card stock and kept in a special binder to help you learn more about the hobby. Enjoy!

► A Swiss stamp from 2013 that is perforated in the shape of a bell.

► The beautiful cover at the right is by David Peterman and shows the Liberty Bell. Don't you like how the artist turned the envelope sideways?

▼ The 2014 cover below incorporates the round global mail stamp into the artwork. The stamp features a wreath made of jingle bells.



# The Liberty Bell

The Liberty Bell is a famous symbol of America's fight for independence. Originally made for the Pennsylvania State House (now known as Independence Hall) in 1752, it cracked the very first time it was rung. It was melted down and remade. During the American Revolution, patriots hid the bell from British soldiers so that it couldn't be used to make cannonballs. The bell cracked in 1835, probably during the funeral of Chief Justice John Marshall. The inscription on the bell is a verse from the Bible (Leviticus 25:10): "Proclaim liberty throughout all the land unto all the inhabitants thereof." People who wanted freedom, or liberty, for enslaved people gave the bell its name in 1839. The bell is mostly copper and tin and weighs about 2,080 pounds. It is on display in Philadelphia.

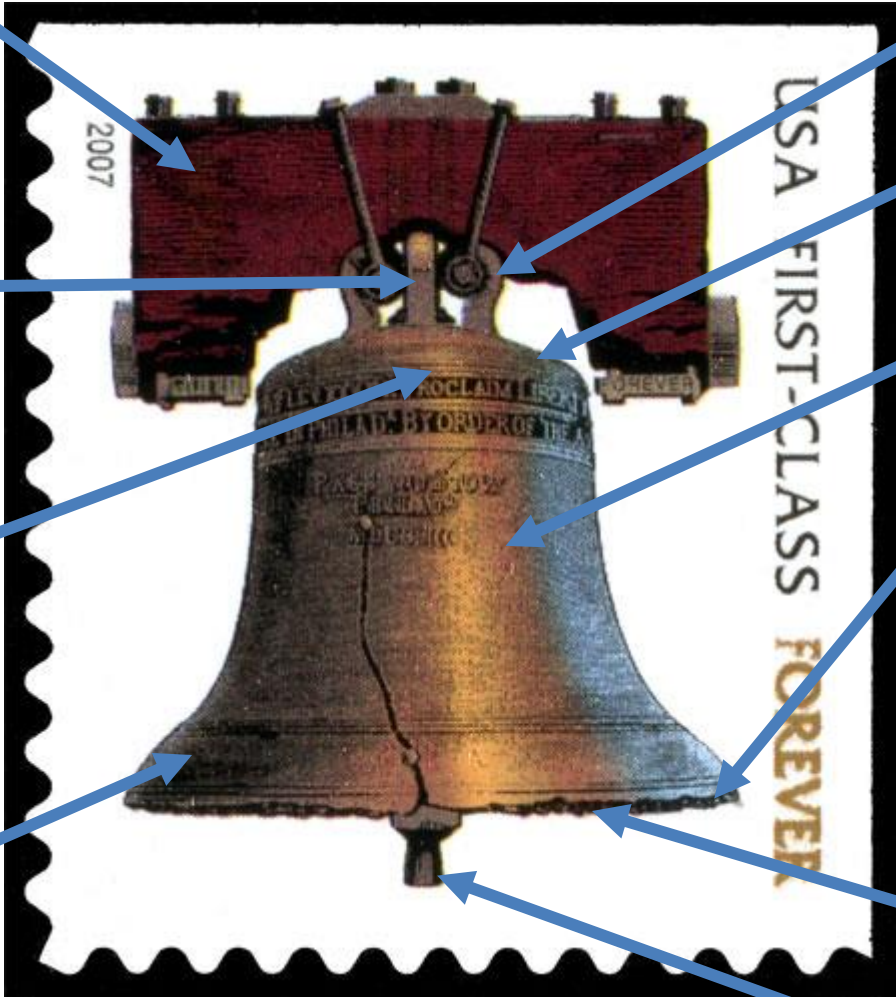
Directions: Label the parts of the bell by choosing from the word bank below.

1. \_\_\_ a thick piece of wood or metal onto which the bell is strapped or fixed.

2. \_\_\_ surrounds the head of the bell and is the part that wraps itself around the upper top edge of the bell.

3. \_\_\_ the central part of the very top surface of the bell. The canons are fitted to the head of the bell.

4. \_\_\_ the area where the clapper strikes and causes the bell to sound. It is the thicker part of the bell and is located at the base. The quality of the sound bow can have a big impact on the sound the bell makes.



5. \_\_\_ metal loops on the top of the bell, which are used to attach the bell to the yoke.

6. \_\_\_ sits below the crown and above the waist.

7. \_\_\_ the middle section of the bell. Typically, this part of the bell will have a gently flared shape that gets wider towards the bottom.

8. \_\_\_ the lower outermost edge of the bell. This part of the bell can also be struck, and it will achieve a different sound to when the sound bow is struck.

9. \_\_\_ located along the inner bottom edge of the bell. This is easy to remember because it is inside the lips of the bell.

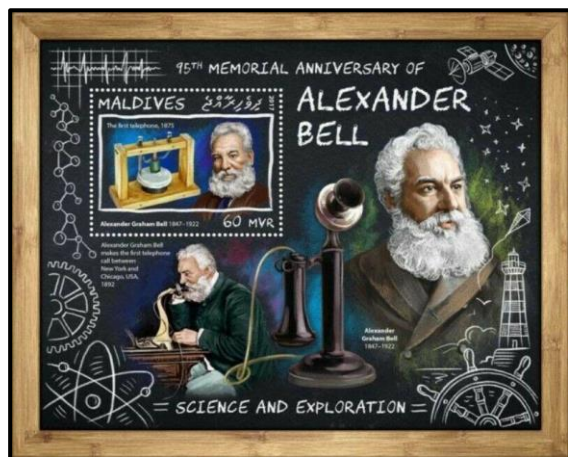
10. \_\_\_ the suspended striker inside a bell which hangs down from the upper central part of the bell.

- |          |              |
|----------|--------------|
| a. Lip   | f. Waist     |
| b. Head  | g. Canons    |
| c. Yoke  | h. Clapper   |
| d. Crown | i. Shoulder  |
| e. Mouth | j. Sound bow |



# Alexander Graham Bell

Alexander Graham Bell was a Scottish scientist and inventor. He was born in 1847 and was twelve years old when his mother started losing her hearing. He developed a "finger language" so that they could communicate. After studying acoustics (the study of sound) at the University of Edinburgh, Bell moved with his family to Canada. A few years later, he moved to Boston and started teaching deaf-mute children, eventually opening up his own school to train other teachers. This work led to him experimenting with different hearing devices which in turn led to the invention of the telephone in 1876. When he died in 1922 at the age of 75, phones across the United States were silenced for a moment in recognition of a man who had revolutionized the world's communication and changed people's lives forever.



Look at the stamps below and notice how much phones have changed over the years. How many phones are pictured in total?





# Bell Flowers

There are many plants around the world that have bell-shaped flowers. These are often referred to as “campanula” and are usually blue, purple, pink, or white. Look at each stamp below and circle the country where it was issued. A country identifier might help. One can be found on the ATA’s website under the YOUTH tab. Answers are below.



1. a. Japan  
b. China  
c. Thailand



2. a. Hungary  
b. Poland  
c. Czechoslovakia



3. a. Spain  
b. Iceland  
c. Italy



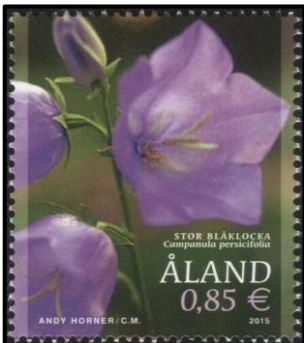
4. a. Poland  
b. Russia  
c. Greece



5. a. Ireland  
b. Italy  
c. Iceland



6. a. Mexico  
b. Greece  
c. Canada



7. a. Iceland  
b. Finland  
c. Ireland



8. a. Ireland  
b. Iceland  
c. Finland



9. a. Germany  
b. Egypt  
c. Bolivia

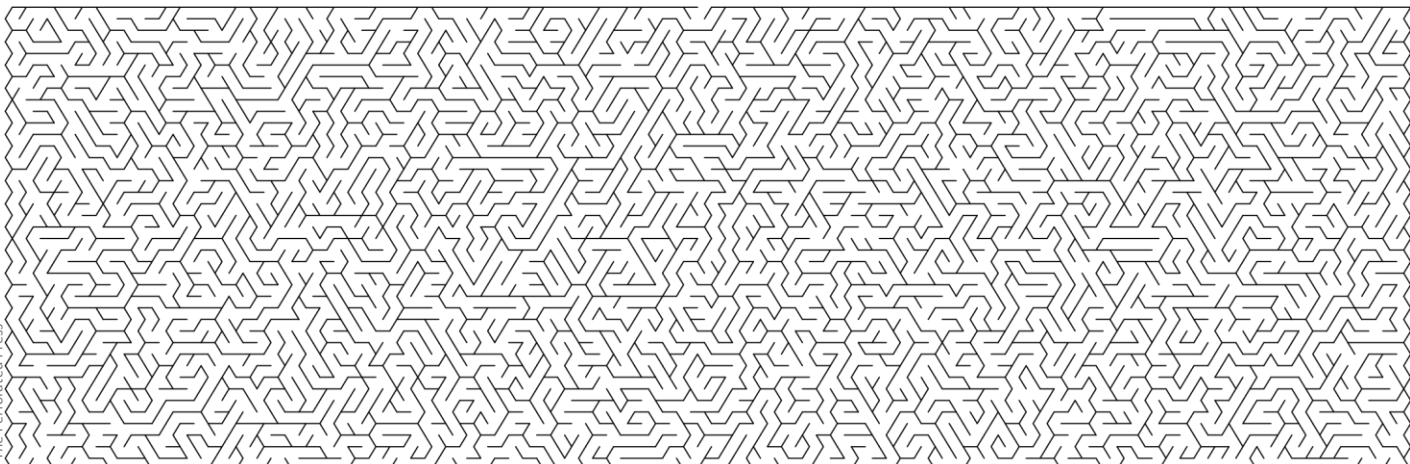
# Haunted Canada

Canada issued a set of stamps commemorating haunting stories from around the country. Two of these have a bell theme. The first (pictured on the left) is of the Phantom Bell Ringers of the Kirk of St. James. According to Canada Post the story goes something like this: In the early morning of October 7, 1853, a sea captain was mystified to hear what sounded like the clanging of a ship's bell coming from the town center. He made his way to the Kirk of St. James, where he and the church keeper spied four women, one peering down from the belfry. The two men pursued the women up to the tower but found nothing except the bell, still vibrating. Later that day, the *Fairy Queen* mail steamer sank in stormy seas, with seven lives lost, including four women – three were members of the congregation of the Kirk of St. James. The second cover shows the Bell Island Swamp Hag. It is said that this spirit dwells in the marshes near Dobbin's Garden and appears to a lone person, overpowering him with her stench. As she covers her victim with her cowl, she always hisses the same words: "No one came to help me when I died in that swamp. No one will help you. Now taste what I tasted and smell what I smelled as my life was taken from me." The victim is found hours later, unconscious and reeking of death. Spooky, huh?!



**Directions:** Oh, no! The Bell Island Swamp hag is after you! Try to make it out of the swamp before she catches you.

[Enter if you dare!](#)



[Congratulations! You escaped the swamp hag's clutches!](#)




# Christmas Bells Scavenger Hunt


Use the cover below to answer the questions. It might help to use a magnifying glass.




## Can you find:

- \_\_\_\_\_ a palm tree
- \_\_\_\_\_ sheet music
- \_\_\_\_\_ a lantern
- \_\_\_\_\_ a cow
- \_\_\_\_\_ a reindeer

How many  can you find? \_\_\_\_\_

How many  can you find? \_\_\_\_\_

How many  can you find? \_\_\_\_\_



## True or False?

1. \_\_\_\_\_ There are 3 bell cancels on the stamps.
2. \_\_\_\_\_ These stamps were issued on Nov. 6, 2011.
3. \_\_\_\_\_ These stamps were issued in Jersey.
4. \_\_\_\_\_ There are 12 stamps in this set.
5. \_\_\_\_\_ Every stamp has a bell on it.



# Sleigh Bells

Who doesn't love the sound of sleigh bells? The first stanza of Edgar Allan Poe's poem, "The Bells," is about these bells and the delightful sounds they make. He wrote:

*Hear the sledges with the bells— Silver bells!  
What a world of merriment their melody foretells!*

*How they tinkle, tinkle, tinkle,  
In the icy air of night!  
While the stars that oversprinkle  
All the heavens, seem to twinkle  
With a crystalline delight;  
Keeping time, time, time,  
In a sort of Runic rhyme,*

*To the tintinabulation that so musically wells  
From the bells, bells, bells, bells,  
Bells, bells, bells—  
From the jingling and the tinkling of the bells.*



United States, 1974.



Finland, 1976.

Sleigh bells are often mentioned in Christmas songs. "Winter Wonderland" begins with the question, "Sleigh bells ring, are you listening?" One of the most famous sleigh songs is "Jingle Bells."



Canada, 2020.

*Jingle bells, jingle bells,  
Jingle all the way.  
Oh, what fun it is to ride  
In a one-horse open sleigh, hey!*

Another song that mentions sleigh bells is "Sleigh Ride."

*Just hear those sleigh bells jingle-ing,  
Ring ting tingle-ing too.  
Come on, it's lovely weather,  
For a sleigh ride together with you.*



Canadian Cinderella stamp, 1981.

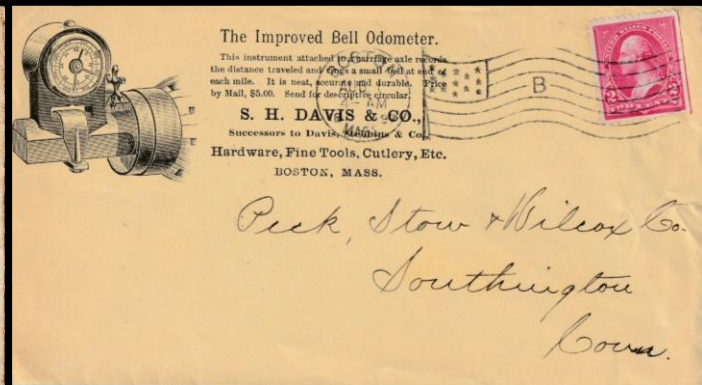
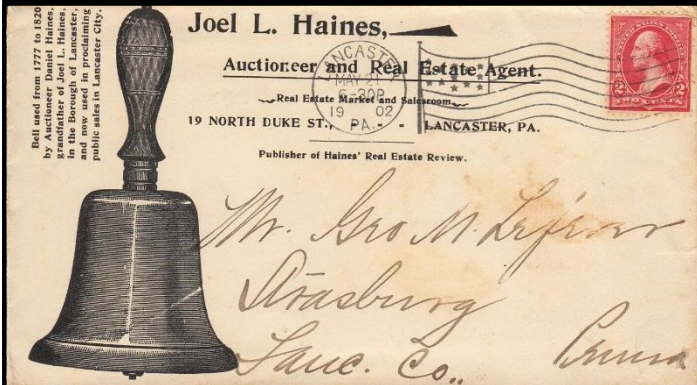
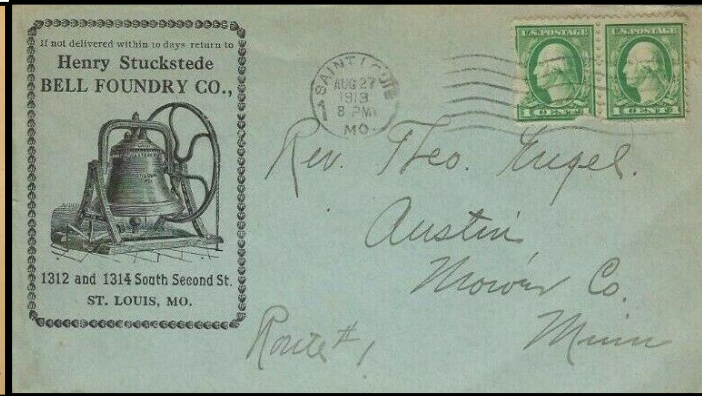
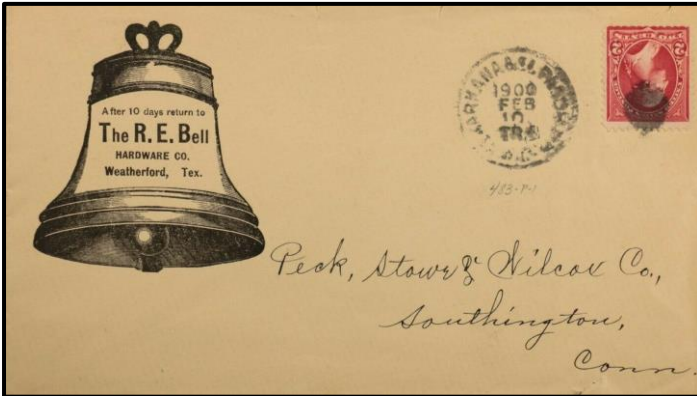
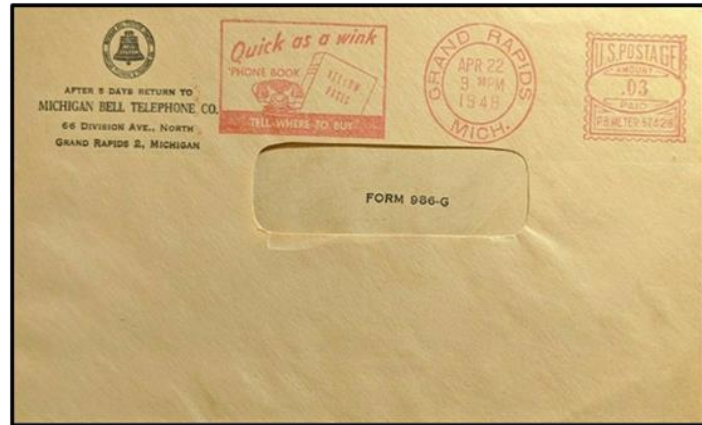


Directions:  
Pretend you jumped into this hand painted cover by Diane B. On another sheet of paper, write a story about your sleigh ride adventure.



# Advertising Covers


An advertising cover is any postally-used envelope that has advertising printed on it. Long ago, businesses used this to advertise the products they sold or the services they offered. All of the advertising covers pictured on this page and the next are bell-themed. Look over each one carefully and determine the state where each business was located. Then color in the state on the map at the bottom of the second page. Answers are underneath the map.





Advertising Covers, cont.

**SILVER BELL RANCH**  
Tucson, Arizona



TUCSON  
JUN 13  
1956

Rincon Kennels  
Route 4, Box 495  
Tucson, Ariz

After 5 days, return to  
**BALDWIN & CO., LIMITED.**  
P. O. BOX 623,  
NEW ORLEANS, LA.

*es. - fee with order  
MAY 1 - 1905*

NEW ORLEANS  
APR 28  
5:32 PM  
1905

S. W. Louisiana Industrial Institute,  
Lafayette,  
La.

WE RECOMMEND  
**SOUTHERN BELLE**  
STOVES & RANGES  
PERFECTION ACHIEVED




**The Cincinnati and Suburban Bell Telephone Co.,**  
Telephone Building,  
CINCINNATI,  
OHIO.

Postmaster—If Party Has Removed Kindly Return  
Postage Guaranteed.

**F. INGOLD IMPORT CO.**  
LAKE GENEVA, WISCONSIN, U. S. A.



LAKE GENEVA  
MAY 8  
5:30 PM  
1960  
WIS.

Mr. Fred Stummasser,  
Callicoon Center,  
N. Y.

IMPORTERS OF  
SWISS COW BELLS ETC. ETC.





# The Name Rings a Bell

See if you can figure out each bell themed riddle below. Answers are at the bottom.

1. In my garden you will find “silver bells and cockle shells and pretty maids all in a row.”  
I am \_\_\_\_\_.
2. Johnny Green put a cat in the well in the nursery rhyme “Ding, Dong, Bell.” I’m the boy who pulled her out. My name is Little Tommy \_\_\_\_\_.
3. I’m the lady who rode a white horse to Banbury Cross. I had “rings on my fingers and bells on my \_\_\_\_\_.”
4. I’m a fairy whose speech sounds like the tinkling of bells. You will often find me with Peter Pan. My name is \_\_\_\_\_.
5. I’m the bell ringer of Notre-Dame Cathedral who is in love with the beautiful dancer Esmeralda. I am \_\_\_\_\_.
6. I watched the bell tower of the North Church for a secret signal— one lantern if the British were marching out by land; two lanterns if they were leaving in boats.  
My name is \_\_\_\_\_.
7. My sleigh is covered with bells that jingle merrily as I deliver presents on Christmas Eve. I am \_\_\_\_\_.
8. You hear me ringing a bell around the holidays to raise money to help those in need.  
I am a \_\_\_\_\_.





# Bell Trivia

See how many of these bell-related questions you can answer, then match the stamp to each clue. Answers are at the bottom.

- \_\_\_\_\_ This 1945 movie starred Bing Crosby and Ingrid Bergman. The Bells of St. \_\_\_\_\_.
- \_\_\_\_\_ What was the real last name of authors Ellis, Acton, and Currer Bell? \_\_\_\_\_
- \_\_\_\_\_ What is the name of the bell in the clock tower in Westminster, London? \_\_\_\_\_
- \_\_\_\_\_ Quasimodo was the famous hunchback bell ringer of which cathedral in Paris? \_\_\_\_\_
- \_\_\_\_\_ What Philadelphia bell is famously cracked? \_\_\_\_\_
- \_\_\_\_\_ Which famous psychologist studied conditioned responses by ringing bells whenever he fed a group of dogs? \_\_\_\_\_
- \_\_\_\_\_ What word is used to refer to the pre-Civil War U.S. South? \_\_\_\_\_
- \_\_\_\_\_ What man is usually credited with inventing the telephone? \_\_\_\_\_
- \_\_\_\_\_ People who are crazy are said to have what flying animal in their belfry? \_\_\_\_\_
- \_\_\_\_\_ This poet uses the word "bells" sixty-two times in his poem "The Bells." \_\_\_\_\_



a



d



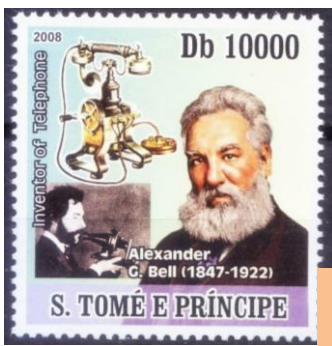
h



e



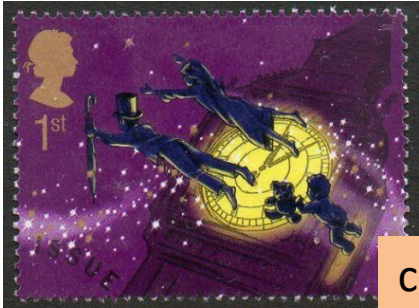
i



b



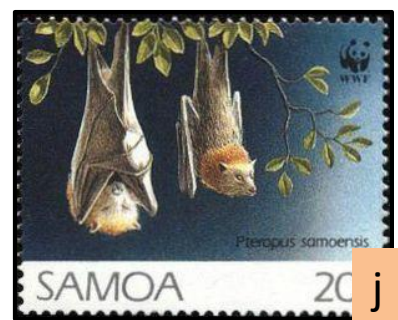
f



c



g



j



# Philatelic Dictionary

Philately (fi-LAT-ə-lee), or stamp collecting has been around since 1840 when the very first postage stamp was issued in Great Britain. Since then, there have been many words used or created to describe all the different aspects of this wonderful hobby.

Illustrated pages defining these terms will be included in *Topical Tidbits* beginning with this issue. These pages should be printed out on cardstock, hole-punched, and put in a three-ring binder. A definition and sample photo will be at the top of each page.

Space will be left at the bottom for you to include your own examples as you find them.





# Semi-postal Stamps

A stamp that is issued to raise money for some purpose, such as a charity. It is sold over and above the cost of postage and is usually noted with a + sign. For example, if the first-class mail rate is 45¢, the semi-postal stamp would sell for 55¢ with the extra 10¢ going to research or charity.



# Precancel

A precanceled stamp, or precancel for short, is a postage stamp that has been cancelled before being affixed to mail, often to facilitate bulk mailing.





# Joint Issue

A joint issue is the release of stamps or postal stationery by two or more countries to commemorate the same topic, event or person.



# Revenue Stamp

A revenue stamp is a (usually) adhesive label used to collect taxes or fees on documents, tobacco, alcoholic drinks, drugs and medicines, playing cards, hunting licenses, firearm registration, and many other things.



# Bells





# Liberty Bell